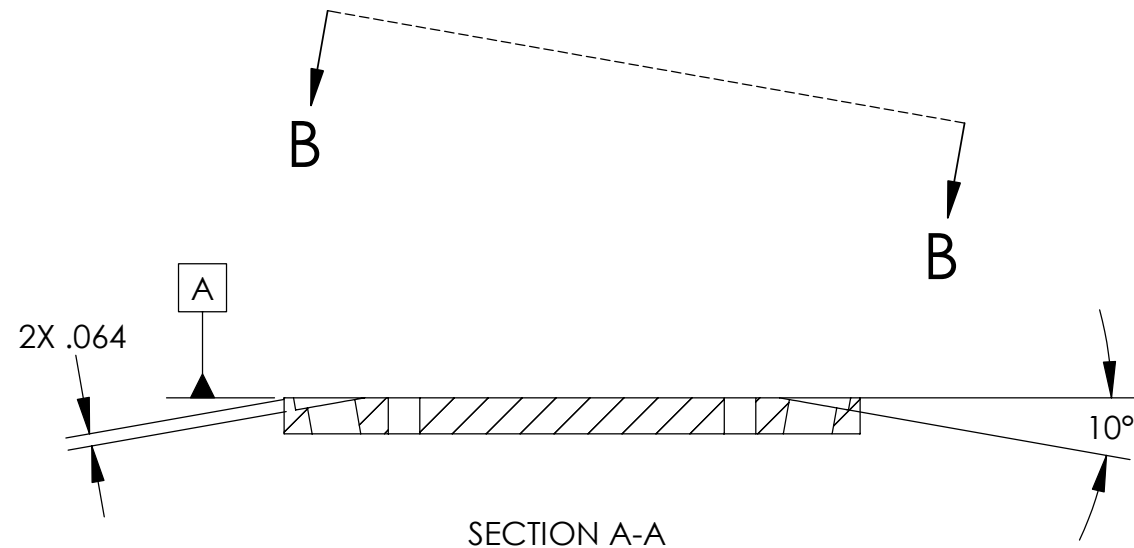
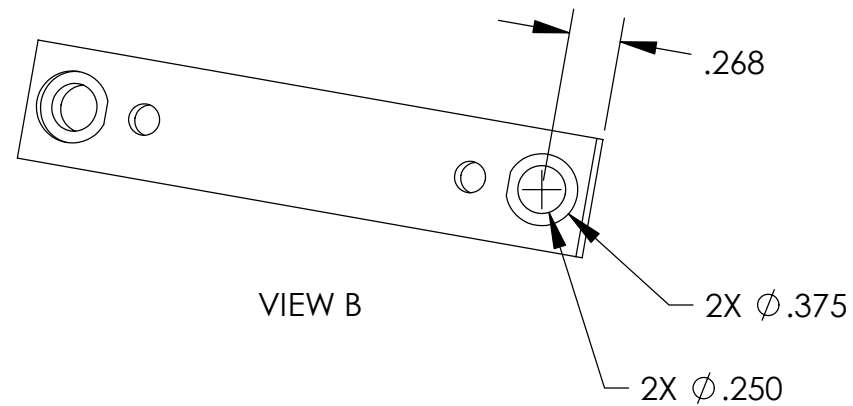
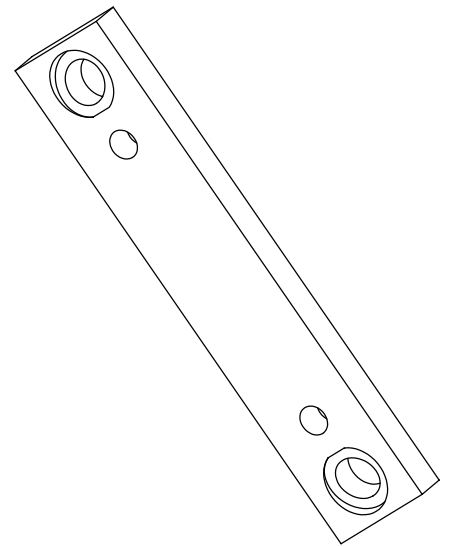
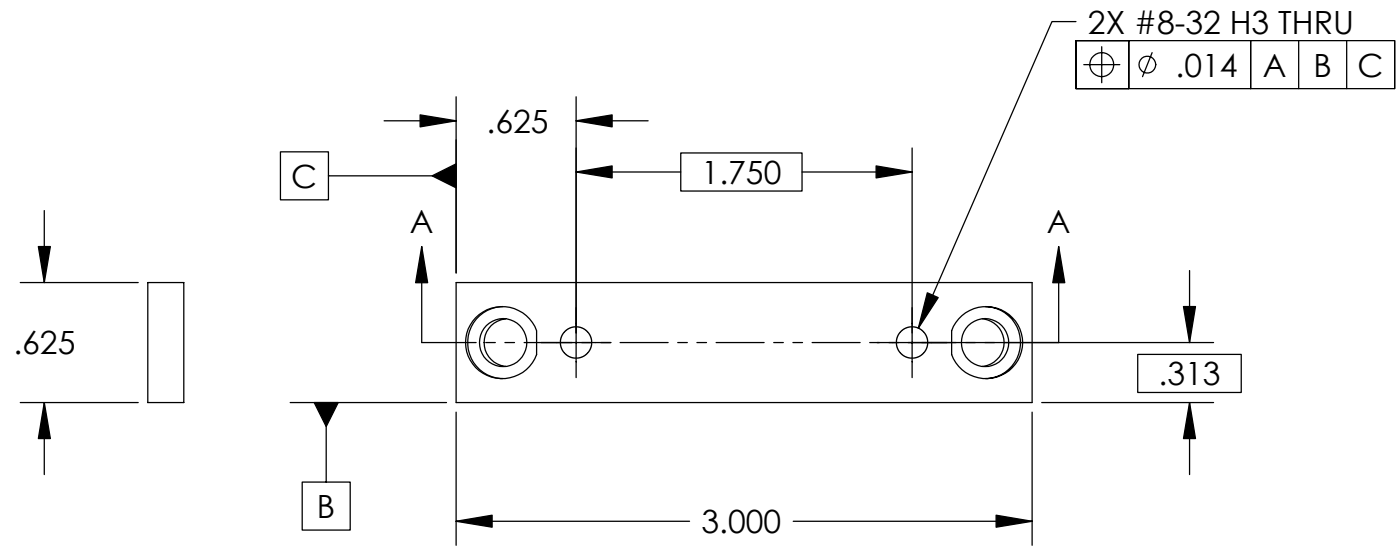


REVISIONS			
ZONE	REV	DESCRIPTION	DATE



NOTES:  
1. PART IS SYMMETRICAL.  
2. .268" DIMENSION IS FROM THEORETICAL  
INTERSECTION/EDGE.  
3. .250 HOLES TO HAVE CLOSE SLIP FIT WITH P/N -141.

UNLESS OTHERWISE SPECIFIED:		<div>High Precision Devices</div> <div>1668 Valtec Lane, Suite C, Boulder, Colorado 80301 Phone: (303) 447-2558 Fax: (303) 447-2548 Web Site: www.hpd-online.com</div>			
DIMENSIONS ARE IN INCHES DECIMAL TOLERANCES: .X ±.030 .XX ±.015 .XXX ±.005					
ANGULAR TOL: ± 1° SURFACE ROUGHNESS <sup>43</sup>					
INTERNAL AND EXTERNAL SURFACE INTERSECTIONS SHALL BE UNIFORMLY FINISHED WITH CHAMFER .005/.010 X 45° OR RADIUS .005/.010. CHAMFER ALL THREADED HOLES 110% OF MAJOR DIAMETER X 45°		TITLE: <div>p02101-140 plate, triangle su</div>			
MATERIAL: <div>304 SST</div>		CONFIGURATION: <div>00-Default</div>			
FINISH: <div>NONE</div>	SIZE <div>B</div>	QTY PER ASSM: <div>6</div>	SCALE: <div>1:1</div>	SHEET <div>1</div> OF <div>1</div>	REV <div>A</div>
	DATE: <div>5/20/2004</div>	DRAWN BY: <div>C. Danaher</div>			